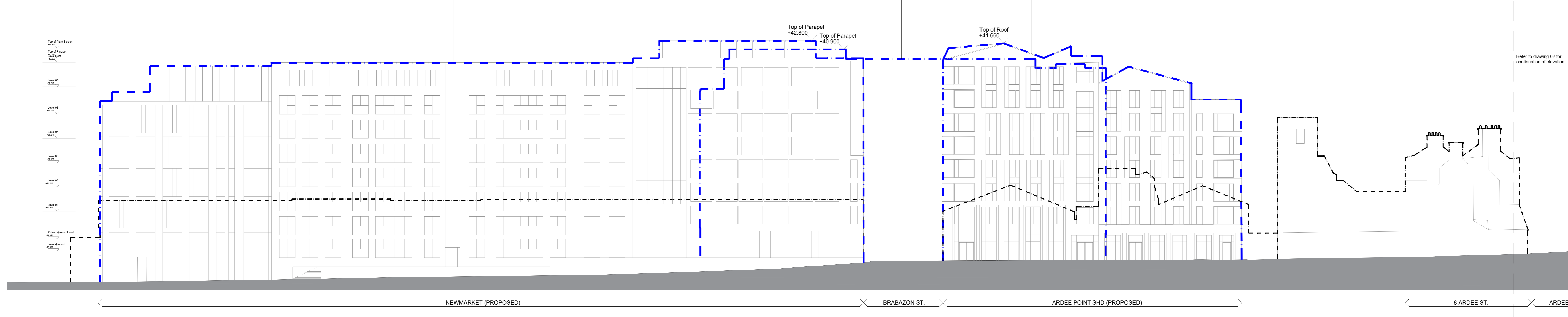


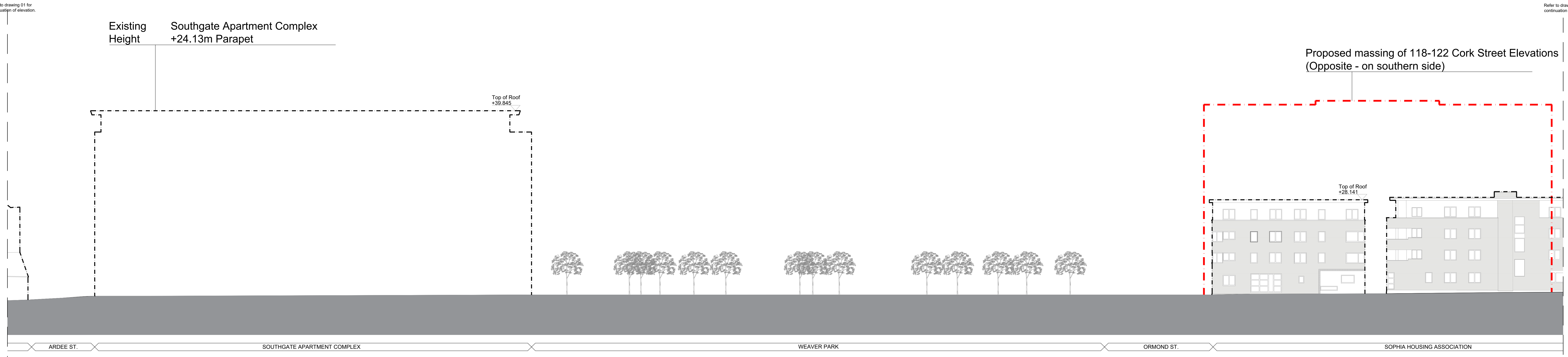
Permitted Height SITE 2, Newmarket Development - 2812/17 +29.45m Parapet

Permitted Height SITE 2, Newmarket Development - 2812/17 +25.3m Parapet (BEHIND CORK ST. - OFF BRABAZON ST.)

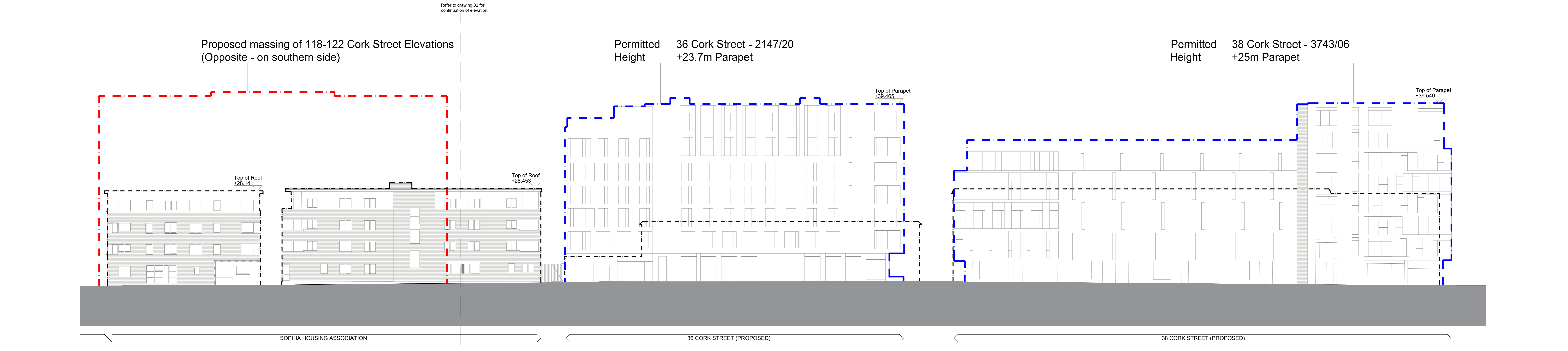
Permitted Height SITE 2, Newmarket Development - 2812/17 +27.26m



01 Proposed Contiguous Cork Street Elevation North [1 of 3]
Scale - 1:200@A0



02 Proposed Contiguous Cork Street Elevation North [2 of 3]
Scale - 1:200@A0

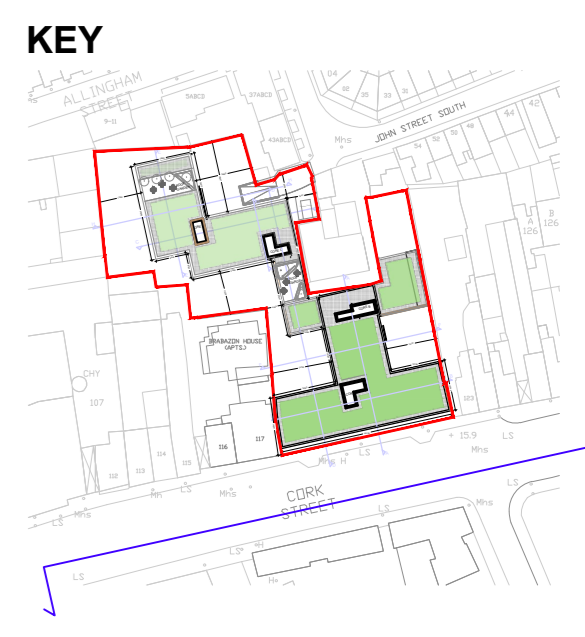


03 Proposed Contiguous Cork Street Elevation North [3 of 3]
Scale - 1:200@A0

GENERAL NOTES

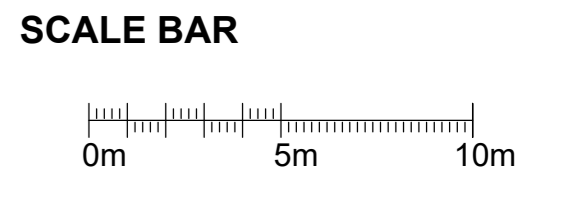
1. COPYRIGHT RESERVED
2. DO NOT SCALE DRAWINGS USE DIMENSIONS ONLY
3. ALL DIMENSIONS TO BE REFERRED TO ARCHITECT
4. THE CONTRACTOR IS RESPONSIBLE FOR CHECKING ALL LEVELS AND DIMENSIONS
5. ALL STRUCTURE TO BE TO STRUCTURAL ENGINEERS DETAILS
6. ALL MECH & ELEC SERVICES TO SERVICES ENGINEERS DETAILS
7. ALL PROPRIETARY ITEMS TO BE INSTALLED IN ACCORDANCE WITH MANUFACTURERS INSTRUCTIONS
8. CONTRACTOR IS RESPONSIBLE FOR THE COORDINATION OF STRUCTURE, FINISHES AND SERVICES

REV	DATE	DESCRIPTION	BY



LEGEND

Development Outline	—
Permitted Parapet Outlines (Behind Cork Street)	—
Existing Building Outlines	---



JOHN FLEMING ARCHITECTS
103 LEESON STREET UPPER, DUBLIN 4
T: (01) 6689888 E: info@jfa.ie W: www.jfa.ie

CLIENT
ALPHABET_ABC

PROJECT
1917_Cork-Street_Co-Living

DRAWING
PROPOSED CONTIGUOUS ELEVATION
CORK ST NORTH

SCALE	JOB NO.
1:200@A0	1917
DRAWN BY	CD
DATE	September 2020
DRAWING NUMBER	REVISION
COR_JFA_00_01_DR_A_P0043	

DRAWING LOCATION
C:\Users\j.fleming\Documents\1917_..._COR_01.dwg

DRAWING STATUS
PLANNING APPLICATION